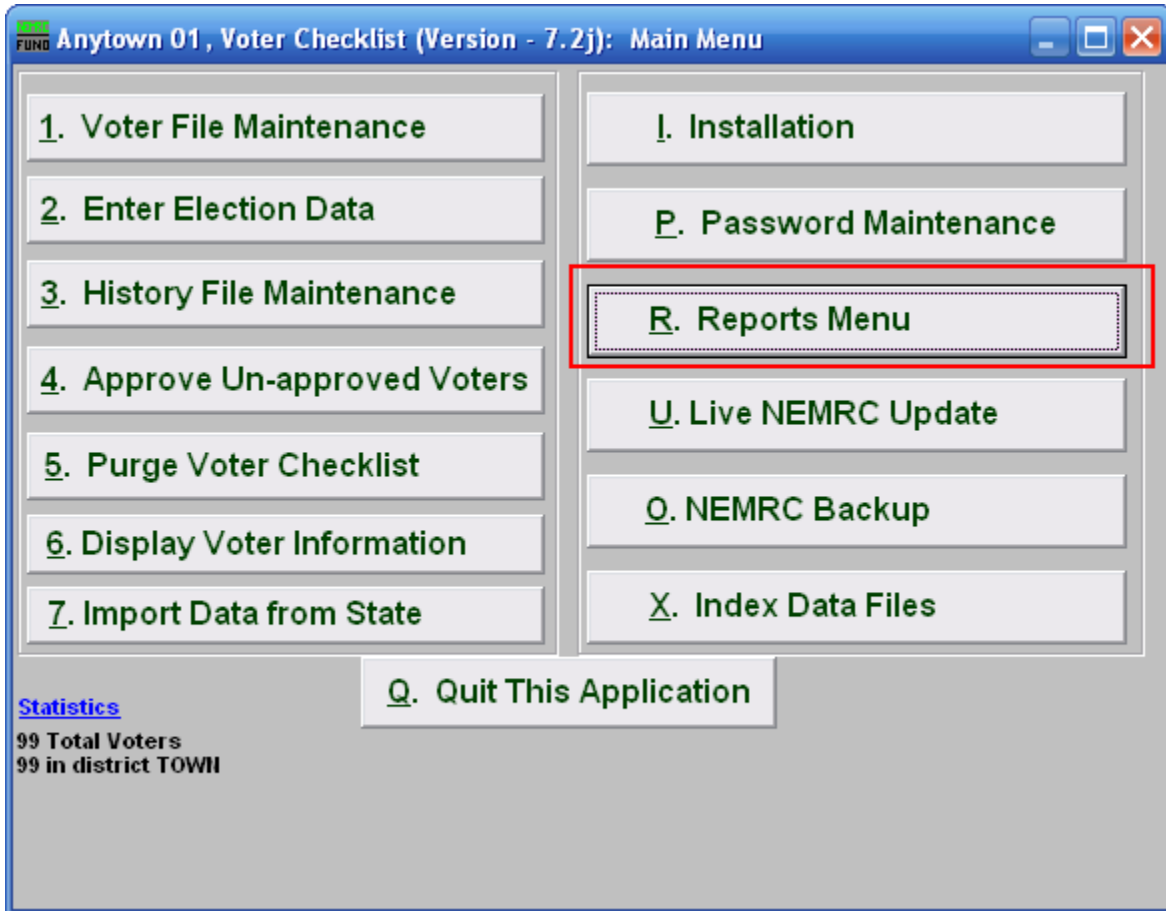


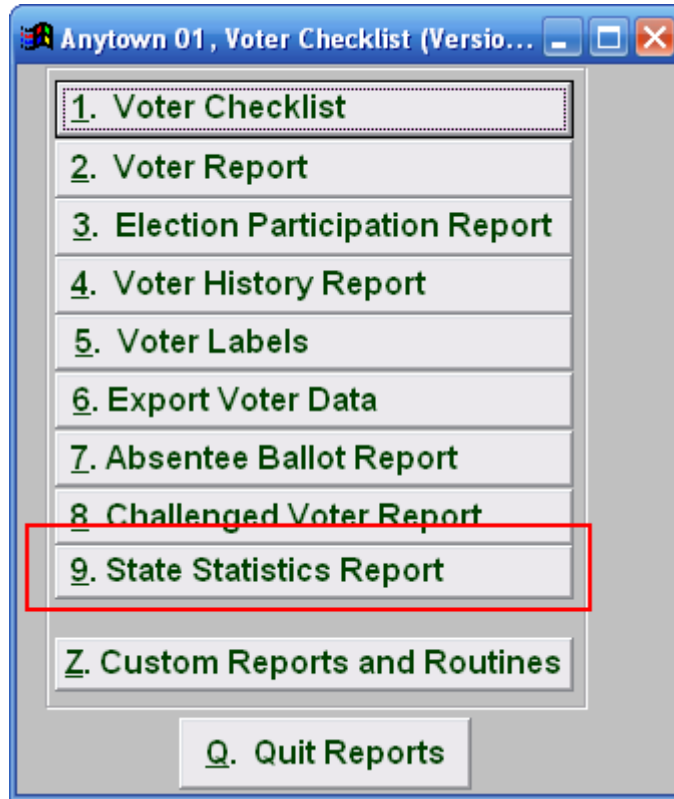
Voter Checklist

R. Reports Menu: 9. State Statistics Report



Click on "R. Reports Menu" from the Main Menu and the following window will appear:

Voter Checklist



Click on "9. State Statistics Report" from the Reports Menu and the following window will appear:

Voter Checklist

State Statistics Report

FUND State Statistics Report

For use in questions 1 & 2 : Challenge date range **1** to

For use in question 4 : Additions date range **2** to

Print 3 **Preview 4** **5 Cancel**

- 1. For use in questions 1 & 2 : Challenge date range:** Enter the date you want to start with to the date you want to end with.
- 2. For use in question 4: Additions date range:** Enter the date you want to start with to the date you want to end with.
- 3. Print:** Click this button to print. Refer to GENERAL PRINTING for more information.
- 4. Preview:** Click this button to preview. Refer to GENERAL PREVIEW for more information.
- 5. Cancel:** Click “Cancel” to cancel and return to the previous screen.